





STROJNÍ ZÁVITNÍK S PŘÍMOU DRÁŽKOU A LAMAČEM

Machine tap with straight flutes and spiral point

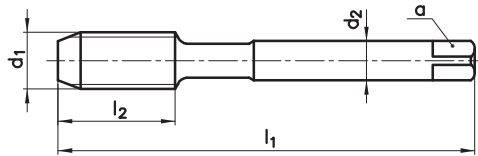
 Maschinengewindebohrer mit geraden Nuten und Schälanschnitt, Form B
 Mашинный метчик с прямой канавкой и со стружколомом

 Maschi a macchina con taglienti diritti e imbocco corretto
 Düz Kanal ve Eğik Ağz Bilemeli Makina Kılavuzu

TYPE
N

3505

3515



TiN

UNF



HSSE

≈DIN
374

2B



d ₁	tpi	l ₁	l ₂	d ₂	a	z	∅		
UNF No.5	44	56	9	2,2	-	3	2,7	•	•
UNF No.6	40	56	11	2,5	2,1	3	3	•	•
UNF No.8	36	63	12	2,8	2,1	3	3,5	•	•
UNF No.10	32	70	13	3,5	2,7	3	4,1	•	•
UNF No.12	28	80	15	4	3	3	4,65	•	•
UNF 1/4	28	80	15	4,5	3,4	3	5,5	•	•
UNF 5/16	24	90	18	6	4,9	3	6,9	•	•
UNF 3/8	24	90	20	7	5,5	3	8,5	•	•
UNF 7/16	20	100	20	8	6,2	3	9,9	•	•
UNF 1/2	20	100	21	9	7	3	11,5	•	•
UNF 9/16	18	100	21	11	9	3	12,9	•	•
UNF 5/8	18	100	21	12	9	3	14,5	•	•
UNF 3/4	16	110	24	14	11	3	17,5	•	•
UNF 7/8	14	125	24	18	14,5	3	20,5	•	•
UNF 1	12	140	26	18	14,5	3	23,25	•	•
UNF 1 1/8	12	150	28	22	18	4	26,5	•	•

Řezné podmínky / Cutting conditions / V_c

P1.1	Konstrukční oceli / Structural steels <500N/mm ²	5-8	6-10
P1.2	Nelegované lité oceli / Plain cast steels <500N/mm ²	6-10	8-12
P2.1	Automatové oceli / Free-cutting steels <800N/mm ²	10-14	10-14
P2.2	Konstrukční oceli / Structural steels <800N/mm ²	10-14	12-15
P2.3	Nelegované lité oceli / Plain cast steels <800N/mm ²	10-14	12-15
K6.2	Tvárná a temper. litina / Spher. graphite and mall. cast iron	4-7	6-8
N8.1	Legovaný hliník / Aluminium alloys Si<10%	14-20	15-30
N8.2	Legovaný hliník / Aluminium alloys Si>10%	12-15	14-20
N10.1	Slitiny mědi s krátkou třískou / Short chipping copper alloys	12-20	15-25

narex
žďanice